

# RO 3003G2™

RO 3003G2™

PTFE

RO 3003™

VLP ED

10GHz 77GHz

3.00

3.07

RO 3003G2

5mil

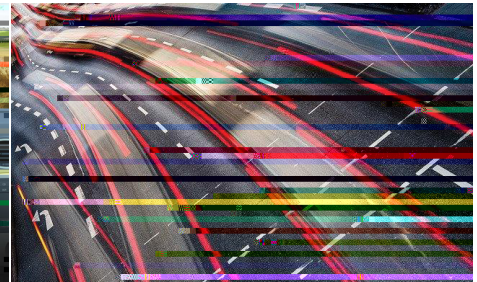
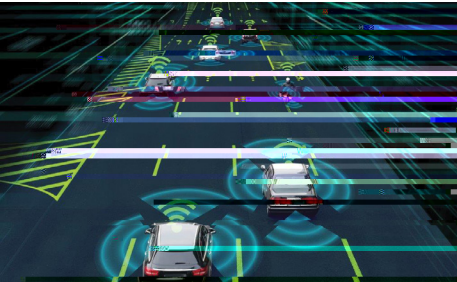
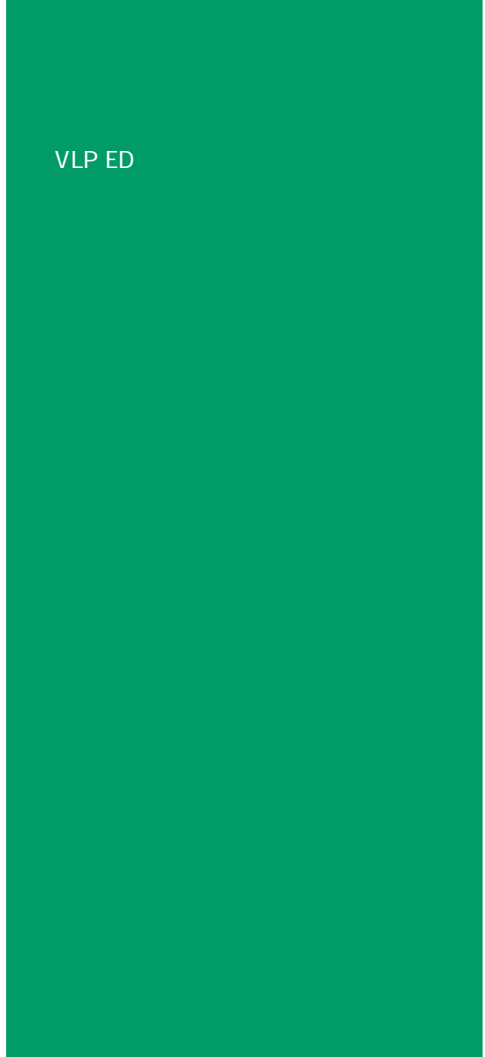
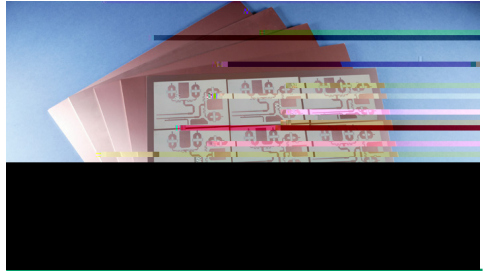
77GHz

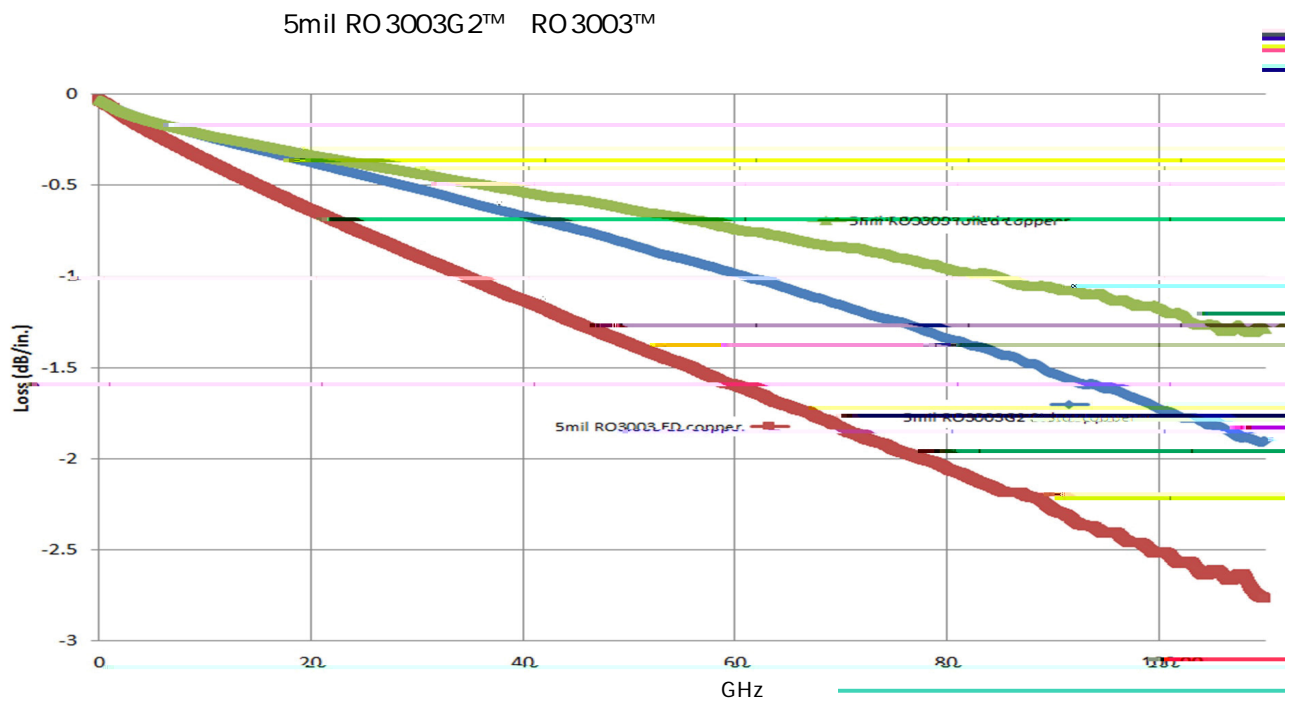
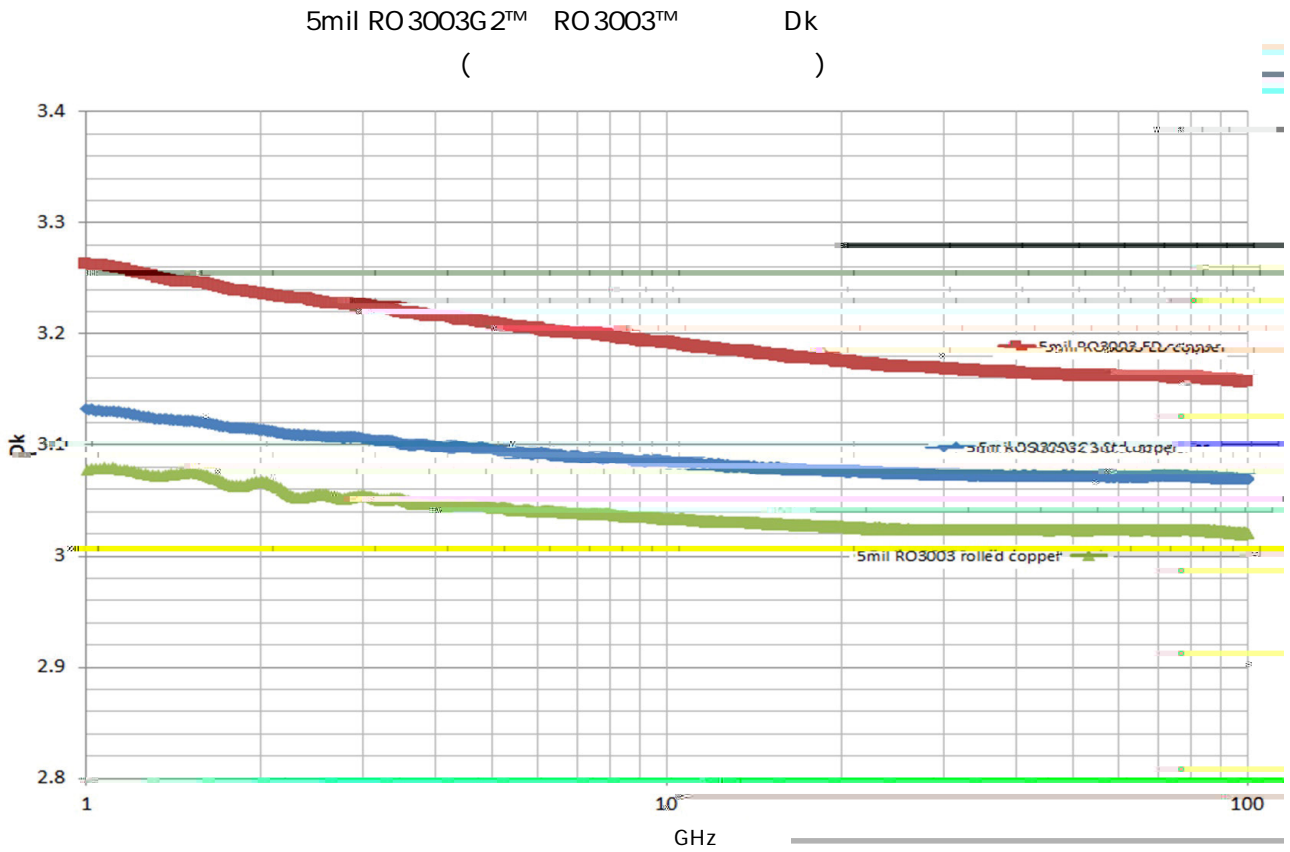
1.3dB/inch

PTFE

" RO 3000®

"







	1		mils (mm)		
	RO3003G2				
$\epsilon_r$	3.00±0.04	Z	-	10GHz 23°C	IPC-TM-650 2.5.5.5
<sup>2</sup> $\epsilon_r$	3.07	Z	-	77GHz	
tan $\delta$	0.0011	Z	-	10GHz 23°C	IPC-TM-650 2.5.5.5
$\epsilon_r$	-35	Z	ppm/°C	10GHz-50 150°C	IPC-TM-650 2.5.5.5
	-0.16 -0.14	X Y	mm/m	Method C	IPC-TM-650 2.2.4
	1.4 X 10 <sup>9</sup>	-	M cm	COND A	IPC 2.5.17.1
	2.6 X 10 <sup>9</sup>	-	M	COND A	IPC 2.5.17.1
	378 396	X Y	Mpa	23	ASTM D638
	0.06	-	%	D48/50	IPC-TM-650 2.6.2.1
	0.73 0.83	Z	J/g/°K	0 50	ASTM E1269-11
	0.43	Z	W/m/°K	50	ASTM D5470
	16 17 18	X Y Z	ppm/°C	23 /50% RH	IPC-TM-650 2.4.41
Td	500	-	°C TGA	-	ASTM D3850
	2.15	-	gm/cm <sup>3</sup>	23	ASTM D792
	16.5	-	lb/in	½ oz. EDC	IPC-TM-2.4.8
	Pending	-	-	-	UL94
		-	-	-	-

1

2 Dk

com/acm/technology

www.rogerscorp.

Sq		
0.7µm sq	2.77	0.2µm

0.005	0.13	24X18	610	X457	½ oz. (18µm) 1 oz. (35µm)
0.010	0.25	24X21	610	X533	

